

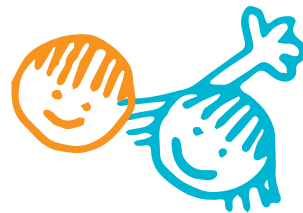
If you have any concerns about your child's health and development, we are always happy to provide an appointment at school or at home to suit you and your child.

Confidentiality

We provide a confidential service; however, occasionally information will be shared in the best interest of your child. We also encourage your child to share worries with you or teachers to support their needs.

How can we be contacted?

The Special School Nursing Service is available between 8.30am and 4.30pm, Monday to Friday, during term time.
Tel contact: Hazel Oak or Reynolds Cross on 0121 706 9108
Tel contact: Forest Oak and Merstone on 0121 717 1056
For contact during the School Holiday please call 0121 746 4437



Useful Contacts

www.Eric.org.uk
www.nhs.uk/changeforlife
www.solihull.gov.uk
www.solihullapproachparenting.com
www.solihullmind.org.uk
www.solihull.gov.uk/familyinfo

www.kooth.com

www.umbrellahealth.co.uk

about continence
about lifestyle choices
about safeguarding
about parenting
about emotional well-being
information for families with children aged 0-19 years
safe and anonymous online support for young people
sexual health services



University Hospitals Birmingham
NHS Foundation Trust

Be visible, accessible and confidential!



Building healthier lives

To promote and protect the health and well-being of children, ensuring that pupils with special needs and complex health needs can fulfil their health and education potential.



About our service

We are a dedicated team; comprising of two registered childrens nurses and two school nurse assistants with training and experience working with children with specialised health needs. Each school has a link school nurse available for direct referral. We work in partnership with families, school, health specialists and social care services. At Reynalds Cross and Merstone we provide a daily service onsite to support clinical need. At Hazel Oak and Forest Oak we provide a regular visit to the schools and are available for contact by phone on the numbers provided.

We provide advice and guidance on a variety of issues including:

- Health assessment and creation of care plans
- Support for children with medical conditions/complex health needs requiring daily or emergency intervention for epilepsy, respiratory difficulties, nutritional requirements etc
- Training for school staff
- Monitoring growth and development
- Assessing and reviewing continence needs
- Behaviour management
- Parenting advice/support using the Solihull Approach Programme
- Emotional health and well-being i.e. self-harm/self-esteem
- Confidential sexual health advice
- Liaison and referral to local specialist services
- Child protection

When your child starts school, health advice and support is transferred from the Health Visiting Service to the School Health Nursing Service in Special Schools for the duration of your child's time at school.

Community

We work with children and young people attending Special Schools to ensure they have access to all local services within the community.

Universal

Children at Special Schools will receive a universal service:

- A health review at school entry age and year 6/7
- Height and weight at school entry and year 6/7
- Signposting and referral to appropriate services
- Advice and support within the school age vaccination programme
- Participation in the PSHE curriculum

Universal Plus

We will offer "early help" with developmental and health issues through:

- Creating care plans for children with medical and complex needs
- Training school staff to support children's specific needs
- Medicines management within school
- Year 6/7 health review
- Advice to children and families on healthy lifestyle choices
- Participation in the PSHE curriculum or one to one support as appropriate
- Advice, support and on-going assessment of continence needs
- Signposting and referral to specialist services

Universal Partnership Plus

We work in partnership with the School, social care and specialist agencies where children, young people and families have on-going needs requiring multi-agency support for:

- Domestic abuse
- Looked after children
- Complex health and developmental needs
- Child sexual exploitation and drugs/ alcohol misuse